

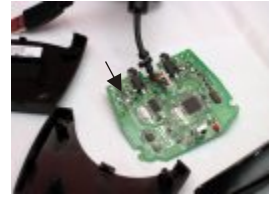
Claritas Instructions for mounting the Microsoft MC IR receiver into the enclosure.

For removing the circuit board, you will require a small torx wrench or jewellers screwdriver small enough to go into the top of the screw. A good small sized posidrive may also work with some effort.

Peel off front two rubber feet

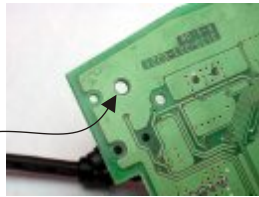


Pry open moulding then unscrew one remaining screw

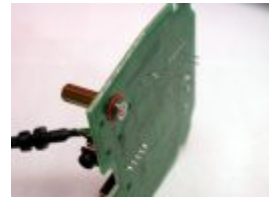


Use a rechargeable drill/screwdriver to enlarge this hole.

This hole has to be drilled out to 3.2mm from 2mm to allow the M3 screw to pass through

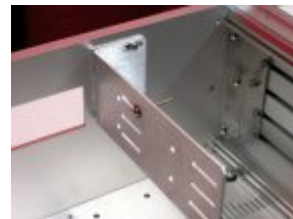
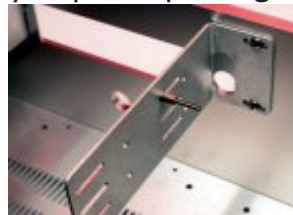


Circuit board shown with hexagonal spacer (use protective fibre washer)



*The hex spacer blocks may require separating slightly so IR eye is aligned.

*Ensure fibre washer is against the circuit board.



Ensure the fibre washer is against the printed circuit board of the IR unit. The M3 nut should now be firmly tightened, - use the M2mm allen key to hold the screw in place whilst you tighten the nut

Sticky pad is used to the front of the board as a safeguard to prevent any movement.



The use of an internal USB connector will ensure that the USB connection is hidden inside the enclosure. This is done via the motherboard's spare USB internal connector and a USB adaptor bracket with the steel 'L' bracket removed (the bracket that allows fixing into a PC card slot) A sticky pad is used to mount the connector against the side extrusion. If the side is being used for extra HDD's the cables can be dressed away from this location. Any excess cables can be neatly held with cable ties.

IR receiver eye in good line of sight, this will work through the blue/black optical drawer cover. The silver drawer cover is not IR transparent.

Stands Unique